

Accessories

Encoder mounting attachments	Fixing components for hollow shaft encoders	Overview
------------------------------	---------------------------------------------	----------

Fig.	Description	Pitch circle diameter	Order No.:	Details s. page	Incremental Encoders				Absolute Singleturn Encoders				Abs. Multiturn Encoders			
					3620	3720	5020	5823, 5824, 5825	3670, 3671, M3678	F3673, F3678	5873, 5878	5870, 5872	F3683, F3688	5883, 5888	5882, 5880	
	Spring element, short For applications with limited axial play and low dynamics, and reduced mounting space	36XX 42 mm M36XX 42 mm F36XX 42 mm 37XX 40 mm 50XX 42 mm 58XX 42 mm	8.0010.4H00.0000 <i>Connection to the application: cylindrical pin</i>	320	X	X	X	X	X	X	X	X	X	X	X	
	Spring element, long For applications with axial play and low dynamics	36XX 60 mm M36XX 60 mm F36XX 60 mm 37XX 63 mm 50XX 44 mm 58XX 65 mm	8.0010.4I00.0000 <i>Connection to the application: cylindrical pin</i>	320	X	X	X	X	X	X	X	X	X	X	X	
	Fastening arm, short (flexible) For applications with axial and radial play, low dynamics	64.5 mm	8.0010.40M0.0000 <i>Connection to the application: screw</i>	320			X	X			X	X		X	X	
	Fastening arm, medium (flexible) For applications with axial and radial play, for constant rotary movements	65 mm ... 91.5 mm	8.0010.40E0.0000 <i>Connection to the application: screw</i>	320			X	X			X	X		X	X	
	Fastening arm, long (flexible) For applications with axial and radial play, and low dynamics	80 mm ... 170 mm	8.0010.4R00.0000 <i>Connection to the application: screw</i>	321			X	X			X	X		X	X	
	Stator coupling, double-winged For applications with axial and radial play, and high dynamics	46 mm	8.0010.4C00.0000 <i>Connection to the application: 2 screws</i>	321	X	X			X	X				X		
	Stator coupling, double-winged For applications with high demands for accuracy	63 mm	8.0010.4D00.0000 <i>Connection to the application: 2 screws</i>	321				Flange C+D	X			X	X		X	X
	Stator coupling, for fixing to side of encoder For standard applications with axial and radial play, and high dynamics	65 mm	8.0010.1602.0000 <i>Connection to the application: 3 screws</i>	322				Flange C+D	X			X	X		X	X
	Stator coupling, for fixing to front of encoder For applications with axial and radial play, and high dynamics	65 mm	8.0010.40L0.0000 <i>Connection to the application: 3 screws</i>	322			X	X				X	X		X	X
	Spring tether element For applications with low axial and radial play, and low dynamics	42 ... 84.5 mm	8.0010.40W0.0000 <i>Connection to the application: 1 screw</i>	322			X	X				X	X		X	X

Accessories

Encoder mounting attachments		Fixing components for hollow shaft encoders			Overview		
Fig.	Description	Pitch circle diameter	Order No.:	Details s. page	A020	A02H	9080, 9081
	Spring element, short For applications with reduced mounting space	76 mm	8.0010.4J00.0000 <i>Connection to the application:</i> cylindrical pin	323	X	X	X
	Spring element, long For applications with high axial play	110 mm	8.0010.4K00.0000 <i>Connection to the application:</i> cylindrical pin	323	X	X	X
	Tether square For applications with axial and radial play with low dynamics for constant rotary movements	9080: 120 mm 9081: 120 mm	8.0010.4G00.0000 <i>Connection to the application:</i> 1 screw	323			X
	Fastening arm, short For applications with axial play	149 mm	8.0010.4T00.0000 <i>Connection to the application:</i> s. details	323	X	X	X
	Fastening arm, long For applications with fastening points located on variable pitch circle diameters	104 mm ... 206 mm	8.0010.4E00.0000 <i>Connection to the application:</i> 1 screw	324	X	X	X
	Tether arm, long For applications with low axial and radial play, flexible in use	Length = 70 mm : Length = 100 mm : Length = 150 mm : 262 mm ... 422 mm	8.0010.40S0.0000 8.0010.40T0.0000 8.0010.40U0.0000 <i>Connection to the application:</i> 1 screw	324	X	X	X
	Stator coupling For applications with axial and radial play, and high dynamics	119 mm	8.0010.40V0.0000 <i>Connection to the application:</i> 2 screws	324	X	X	

Accessories

Encoder mounting attachments Fixing components for hollow shaft encoders Details

Dimensions / Details

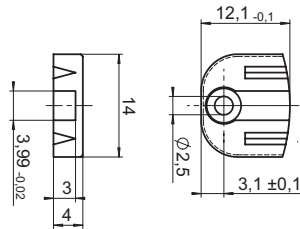
Spring element, short

Scope of delivery:

- spring element (plastic)
- 1 screw for fixing to the encoder

Connection to application:

- cylindrical pin
8.0010.4700.0000
(not supplied)



Order-No.

8.0010.4H00.0000

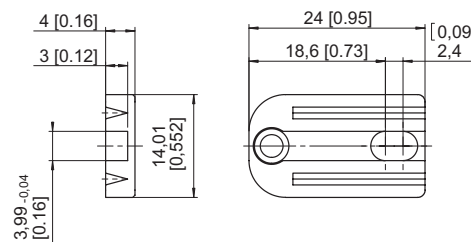
Spring element, long

Scope of delivery:

- spring element (plastic)
- 1 screw for fixing to the encoder

Connection to application:

- cylindrical pin
8.0010.4700.0000
(not supplied)

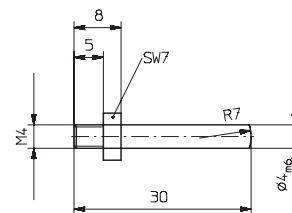


Order-No.

8.0010.4I00.0000

Cylindrical pin, long with fastening thread

suitable for spring element short (8.0010.4H00.0000) and long (8.0010.4I00.0000)



Order-No.

8.0010.4700.0000

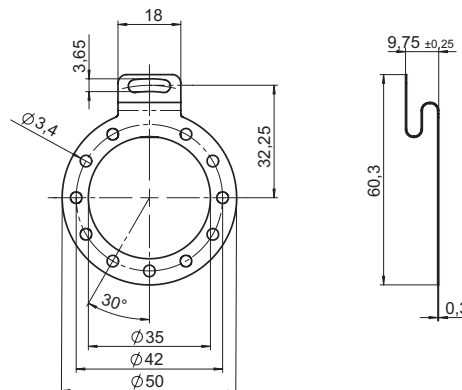
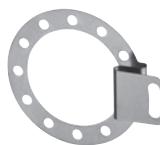
Fastening arm, short

Scope of delivery:

- Fastening arm (stainless steel)
- 3 screws for fixing to the encoder

Connection to application:

- 1 screw
(not supplied)



Order-No.

8.0010.40M0.0000

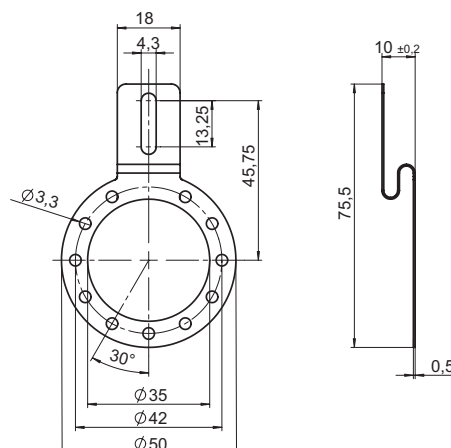
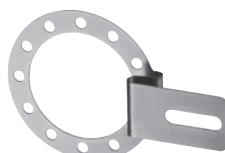
Fastening arm, medium

Scope of delivery:

- Fastening arm (stainless steel)
- 3 screws for fixing to the encoder

Connection to application:

- 1 screw
(not supplied)



Order-No.

8.0010.40E0.0000

Accessories

Encoder mounting attachments Fixing components for hollow shaft encoders Details

Dimensions / Details

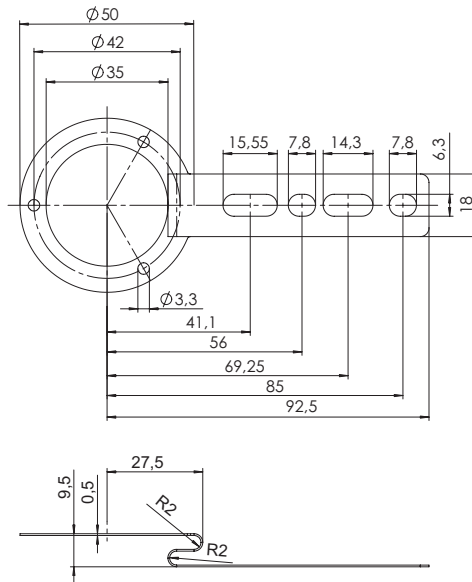
Fastening arm, long

Scope of delivery:

- Fastening arm (stainless steel)
- 3 screws for fixing to the encoder

Connection to application:

- 1 screw (not supplied)



Order-No.

8.0010.4R00.0000

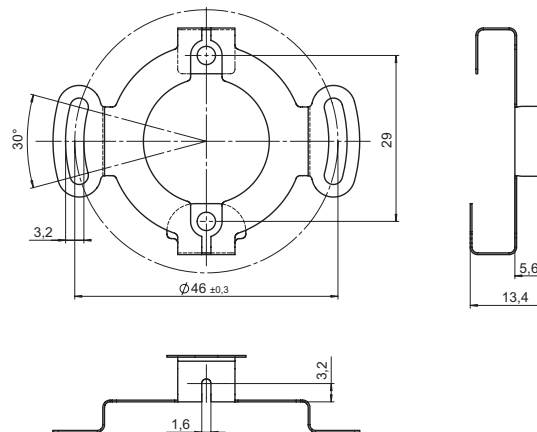
Stator coupling, double-winged for front fixing onto the encoder flange

Scope of delivery:

- Stator coupling (stainless steel)
- 2 screws for fixing to the encoder

Connection to application:

- 2 screws (not supplied)



Order-No.

8.0010.4C00.0000

Stator coupling, double-winged for side fixing onto the encoder flange

Scope of delivery:

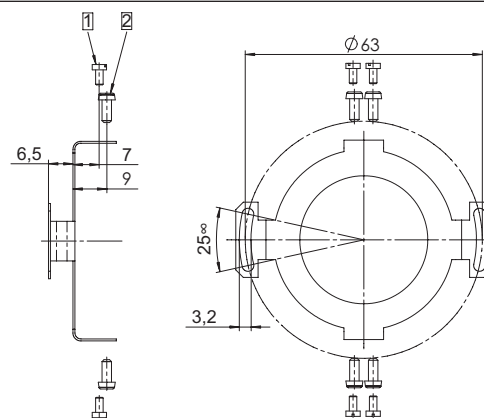
- Stator coupling (stainless steel)

- 1 4 screws M2 x 4 mm for fixing to the encoder 5882

- 2 4 screws M2.5 x 6 mm for fixing to the encoders 582X, 587X, 502X

Connection to application:

- 2 socket head screws M3 x 8 with washer (supplied)



Order-No.

8.0010.4D00.0000

Accessories

Encoder mounting attachments Fixing components for hollow shaft encoders Details

Dimensions / Details

Stator coupling, for side fixing onto the encoder flange

Scope of delivery:

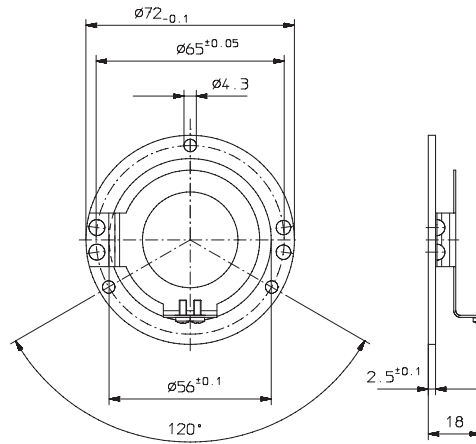
- Stator coupling (stainless steel)

1 2 screws M2 x 4 mm for fixing to the encoder 5882

2 2 screws M2.5 x 6 mm for fixing to the encoders 582X, 587X, 502X

Connection to application:

- 3 screws (not supplied)



Order-No.

8.0010.1602.0000

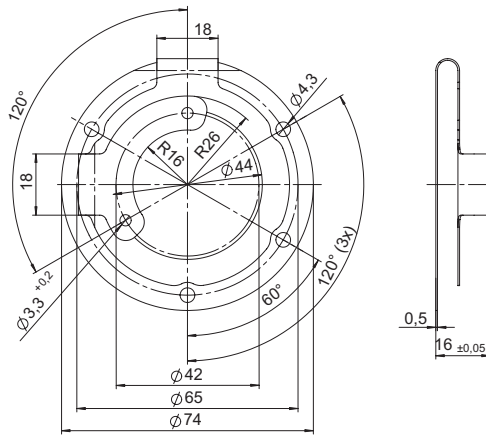
Stator coupling, for front fixing onto the encoder flange

Scope of delivery:

- Stator coupling (stainless steel)
- 2 screws for fixing to the encoder

Connection to application:

- 3 screws (not supplied)



Order-No.

8.0010.40L0.0000

Spring tether element

Scope of delivery:

- Spring tether element
- 1 screw for fixing to the encoder

Connection to application:

- 1 screw (not supplied)

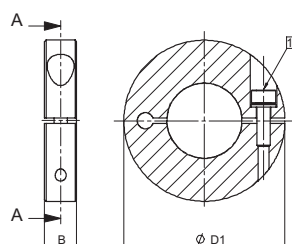


Order-No.

8.0000.40W0.0000

Clamping ring

Stainless steel, for high rotational speeds



	for encoder	B	D1	for hollow shaft ø
582X		6 mm	25 mm	6 mm
		6 mm	27 mm	8 mm
		6 mm	29 mm	10 mm
		6.2 mm	30 mm	12 mm
5020		6.2 mm	30 mm	12 mm

Order-No.

8.0000.4T00.0000

8.0000.4U00.0000

8.0000.4V00.0000

8.0000.4W00.0000

8.0000.4W01.0000

1 screw DIN 912 A2 M2.5, max. tightening torque 0.45 Nm

Accessories

Encoder mounting attachments Fixing components for hollow shaft encoders Details

Dimensions / Details

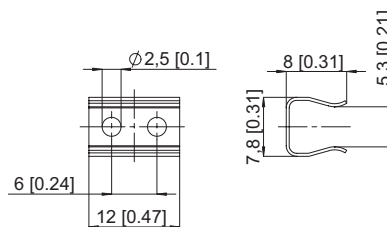
Spring element, short

Scope of delivery:

- spring element (stainless steel)
- 2 screws for fixing to the encoder

Connection to application:

- cylindrical pin (8.0010.4700.0003) (not supplied)



Order-No.

8.0010.4J00.0000

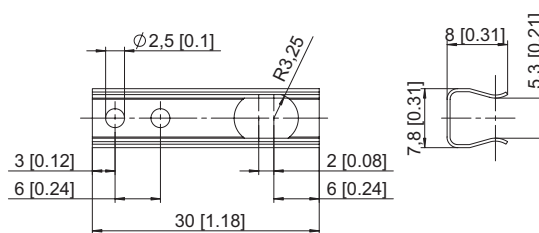
Spring element, long

Scope of delivery:

- Spring element (stainless steel)
- 2 screws for fixing to the encoder

Connection to application:

- cylindrical pin (8.0010.4700.0003) (not supplied)

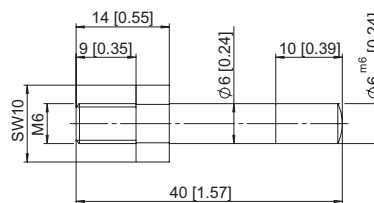


Order-No.

8.0010.4K00.0000

Cylindrical pin, long with fastening thread

suitable for spring element short (8.0010.4H00.0000) and long (8.0010.4I00.0000)



Order-No.

8.0010.4700.0003

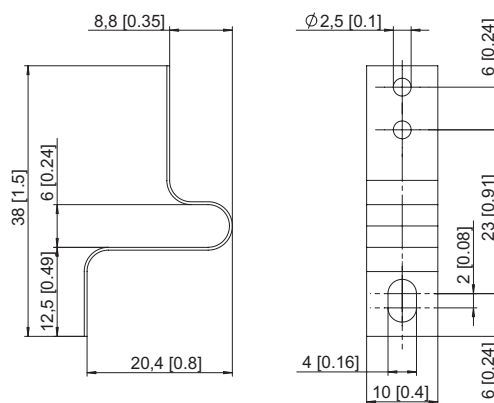
Tether square

Scope of delivery:

- tether square (stainless steel)
- 2 screws for fixing to the encoder

Connection to application:

- 1 screw (not supplied)



Order-No.

8.0010.4G00.0000

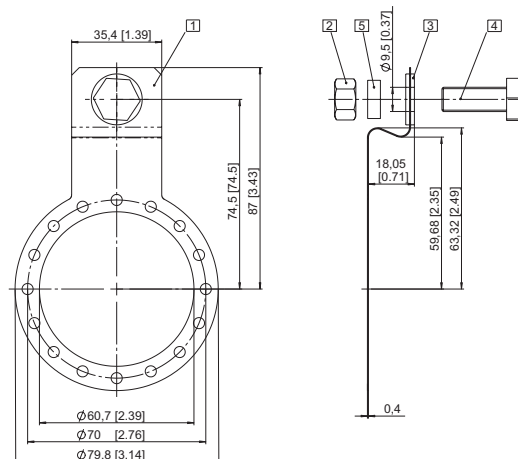
Fastening arm, short

Scope of delivery:

- ① Fastening arm
- 3 screws for fixing to the encoder

Connection to application:

- ② Hexagonal nut 3/8 - 16 UNC
- ③ Washer (isolating)
- ④ Hexagonal screw 3/8 16 UNC x 1"
- ⑤ Washer D10.4 x 15 x 15 (supplied)



Order-No.

8.0010.4T00.0000

Accessories

Encoder mounting attachments Fixing components for hollow shaft encoders Details

Dimensions / Details

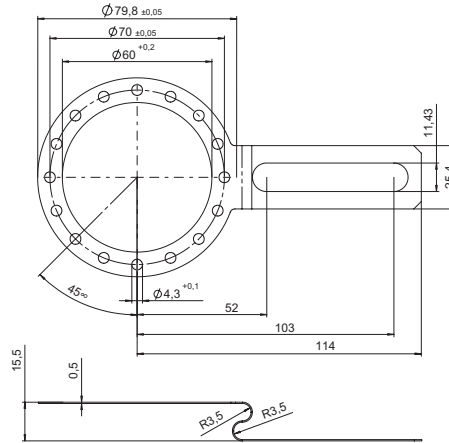
Fastening arm, short

Scope of delivery:

- Fastening arm (stainless-steel)
- 3 screws for fixing to the encoder

Connection to application:

- 1 screw (not supplied)



Order-No.

8.0010.4E00.0000

Tether arm, long

Scope of delivery:

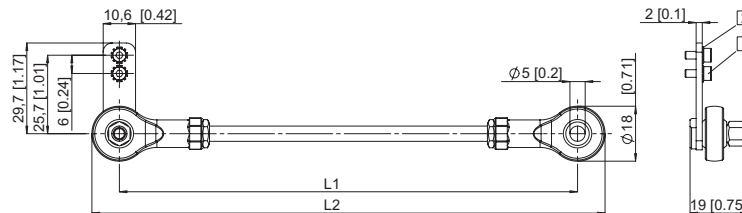
- Tether arm

1 2 Socket cap screws M2.5 x 6

2 2 Lock washers for fixing to the encoder

Connection to application:

- 1 screw (not supplied)



L1	L2
70 [2.76]	88 [3.46]
100 [3.94]	118 [4.65]
150 [5.91]	168 [6.61]

Order-No.

8.0010.40S0.0000

8.0010.40T0.0000

8.0010.40U0.0000

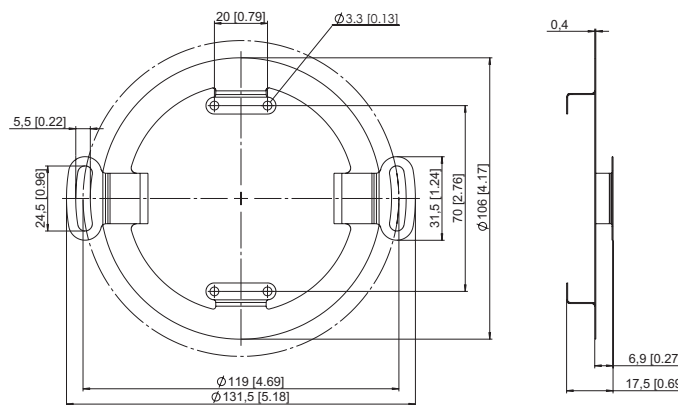
Stator coupling

Scope of delivery:

- Stator coupling (stainless steel)
- 4 screws for fixing to the encoder

Connection to application:

- 2 screws (not supplied)



Order-No.

8.0010.40V0.0000